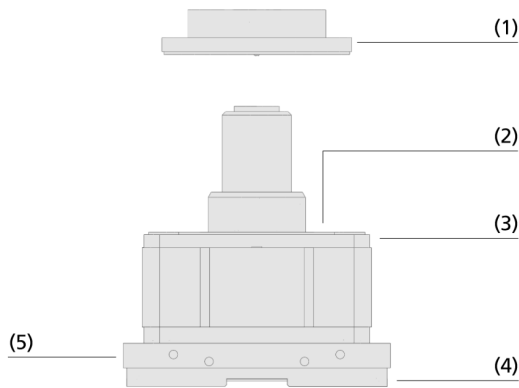


Mechanical Clamps VCMC-K2

Clamping range 10 mm to 100 mm



Mechanical Clamps VCMC-K2



System Design Mechanical Clamps VCMC-K2



Mechanical clamps VCMC-K2 for clamping frame parts

Suitability for Industry Specific Applications

- Mechanical clamping system for CNC machining centers with console table (two-circuit system)
- The mechanical clamps are activated via vacuum so that no further medium is required at the machine for clamping
- The clamp is pre-fastened to the console using one vacuum circuit, while the second circuit pulls the piston and clamping disc downward
- Particularly well suited for narrow and curved workpieces such as frame parts and window profiles
- If the suction area is insufficient, they can be securely clamped mechanically during machining

Design

- Eccentric clamping disc (1) is pulled downward by the vacuum of the two-circuit console via a piston in the clamp
- Friction material (2) for optimizing lateral force absorption
- Main body (3) made of aluminum with interface (4) to the console
- Optional fixing flap (5) for repeatable positioning

Product Highlights

- Eccentrically positioned clamping plates for optimum use of the clamping surface
- Holds even narrow workpieces securely with clamping forces of up to 700 N
- No additional medium necessary, as it can be activated via the operating vacuum of the CNC machining center
- Withstands the strongest lateral forces thanks to special friction materials

Mechanical Clamps VCMC-K2

Clamping range 10 mm to 100 mm

Designation Code Mechanical Clamps VCMC-K2

VCMC-K2	–	154x128x100	–	10-100	–	FI
1		2		3		4

1 – Abbreviated designation

Code	Type
VCMC-K2	Mechanical clamp, 2-circuit console system

2 – Dimensions

Code	LxWxH in mm
154x128x50...	154x128x50 to
170x128x100	170x128x100

3 – Clamping range

Code	Clamping range in mm
12-80...	12-80 to 10-100
10-100	

4 – Product addition

Code	Type
FI	Fixing flap

The Mechanical Clamp VCMC-K2 is delivered assembled. The product consists of:

- Clamping disc
- Base body made of aluminium

Available spare parts: Clamping disc

Available accessories: Wear parts kit

Ordering Data Mechanical Clamps VCMC-K2

Type	Type	Part no.
VCMC-K2 154x128x50	with adjustment of the clamping plate by hexagon socket	10.01.12.00737
VCMC-K2 154x128x75	with adjustment of the clamping plate by hexagon socket	10.01.12.02218
VCMC-K2 154x128x100	with adjustment of the clamping plate by hexagon socket	10.01.12.01885
VCMC-K2 154x128x125	with adjustment of the clamping plate by hexagon socket	10.01.12.02217

Ordering Data Spare Parts Mechanical Clamps VCMC-K2

Type*			Part no.
Clamping disc	Eccentric Flat	SPAN-TELL 110x14 EX VCMC	10.01.12.01980
Clamping disc	Eccentrically standard	SPAN-TELL 110x25.5 EX VCMC	10.01.12.01930
Clamping disc	Eccentrically high	SPAN-TELL 110x40.5 EX VCMC	10.01.12.01936

*Not for clamps with height 50 mm

Type	Spare Parts		Part no.
VCMC-K2 154x128x50	Clamping disc	SPAN-TELL 100x27.5 EXZ 12-80 VCMC	10.01.12.01783
VCMC-K2 154x128x75	Clamping disc	SPAN-TELL 100x27.5 EXZ 12-80 VCMC	10.01.12.01783

Ordering Data Accessories Mechanical Clamps VCMC-K2

Type	Accessories	Part no.	
VCMC-K2	Set of parts subject to wear	VST VCMC Fixierung	10.01.12.02122

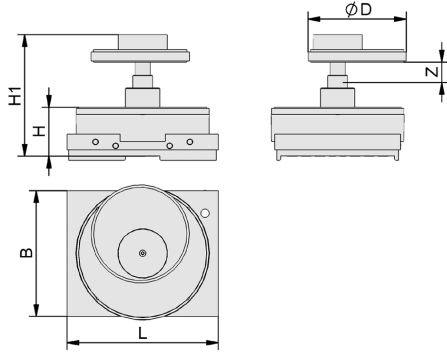
Technical Data Mechanical Clamps VCMC-K2

Type	Weight [kg]	Clamping range [mm]
VCMC-K2 154x128x50	0.7	12.0 ... 80.0 mm
VCMC-K2 154x128x75	2.5	12.0 ... 80.0 mm
VCMC-K2 154x128x100	3.3	10.0 ... 100.0 mm
VCMC-K2 154x128x125	4.5	10.0 ... 100.0 mm

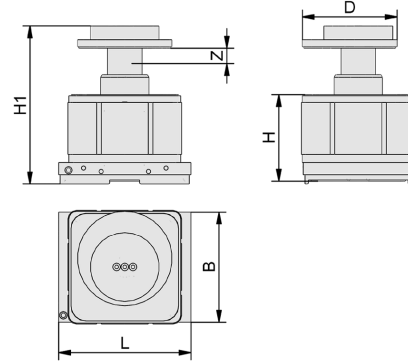
Mechanical Clamps VCMC-K2

Clamping range 10 mm to 100 mm

Design Data Mechanical Clamps VCMC-K2



VCMC-K2 12-80



VCMC-K2 10-100

Mechanical Clamps VCMC-K2

Clamping range 10 mm to 100 mm

Design Data Mechanical Clamps VCMC-K2

Type	B [mm]	D [mm]	H [mm]	H1 [mm]	L [mm]	Z (Stroke) [mm]
VCMC-K2 154x128x50	128	135	50	115	154	10
VCMC-K2 154x128x75	128	135	75	140	154	10
VCMC-K2 154x128x100	128	110	100	179	154	40
VCMC-K2 154x128x125	128	110	125	204	154	40